



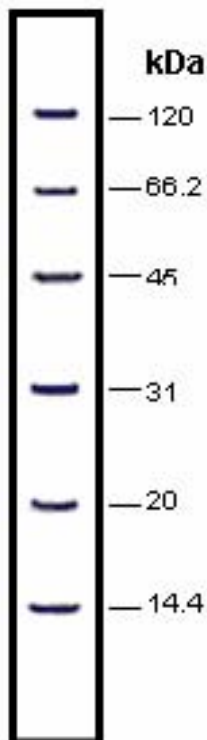
PRODUCT INFORMATION

Catalog No.: MRPM202-50, 202-250

Product Name: **Protein Marker: Unstained, Mid Range**

Description: The Mid Range Protein Marker can be used as an unstained protein marker. It is a mixture of purified proteins of known molecular weights, used as standards in determining the molecular weight of unknown proteins run on SDS-polyacrylamide gel electrophoresis (SDS-PAGE). The Mid Range Protein Marker displays 6 protein bands between 14.4-120KDa, and is useful on acrylamide gels of varying concentrations.

Tech Note: The marker is in a ready-to-use format. Load the marker into the designated lane(s) for the protein standard. However, it can be diluted into the same buffer used for sample preparation. This protein marker mixture is custom-blended to yield protein bands of clear intensity when stained using standard Coomassie Brilliant Blue staining procedures.



	MW (KDa)
β -Galactosidase	120
Bovine Serum Albumin	66.2
Ovalbumin	45
Carbonic Anhydrase	31
Soybean Trypsin Inhibitor	20
Lysozyme	14.4
Package Size	50 Loadings, 5X 50 Loadings
Recommended gel conc.	10-20%
Storage	-20oC

	Size	Catalog No.
Protein Markers:	50 Loadings	MRPM202-50
Unstained, Mid Range	250 Loadings	MRPM202-250